



# Observations on

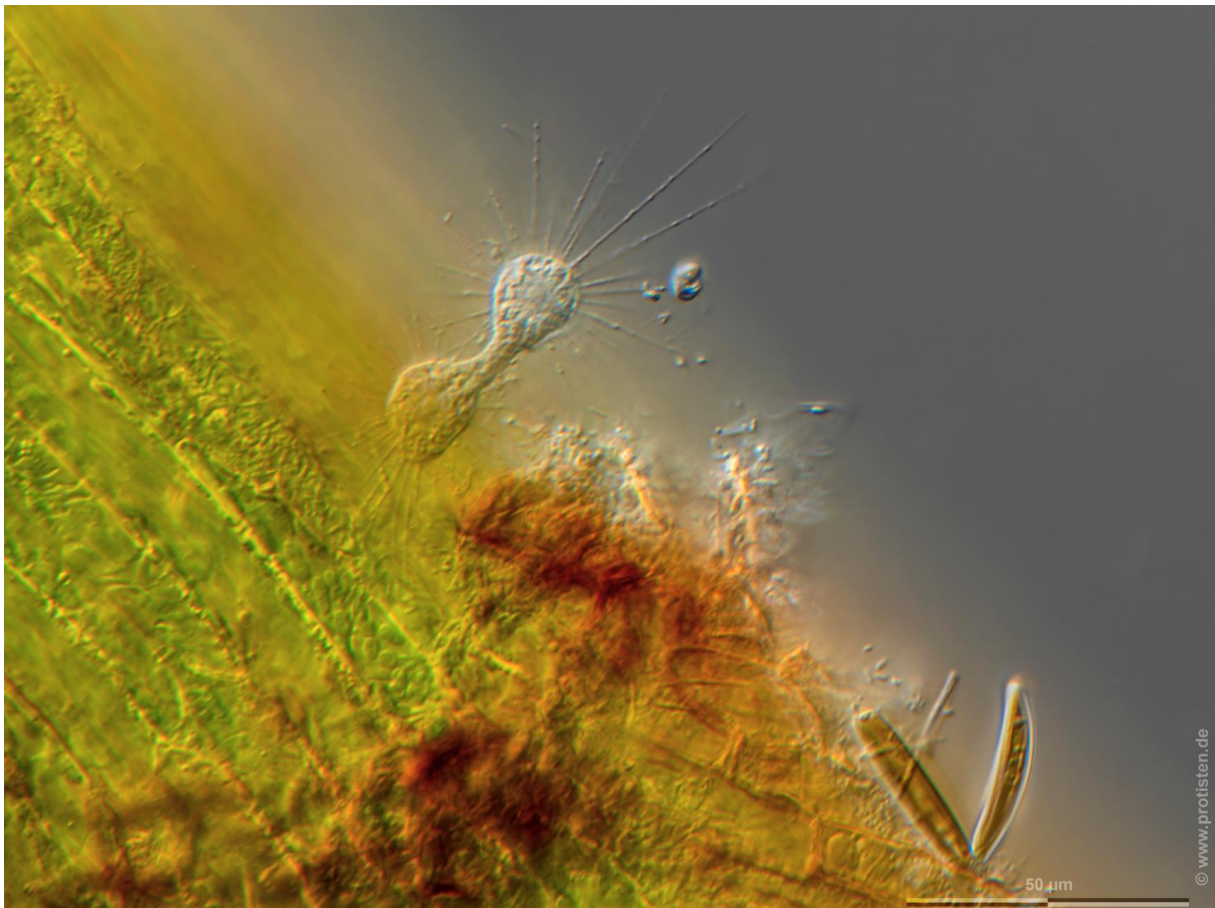
## *Nuclearia simplex* Cienkowsky 1865

Most likely ID: n. a.

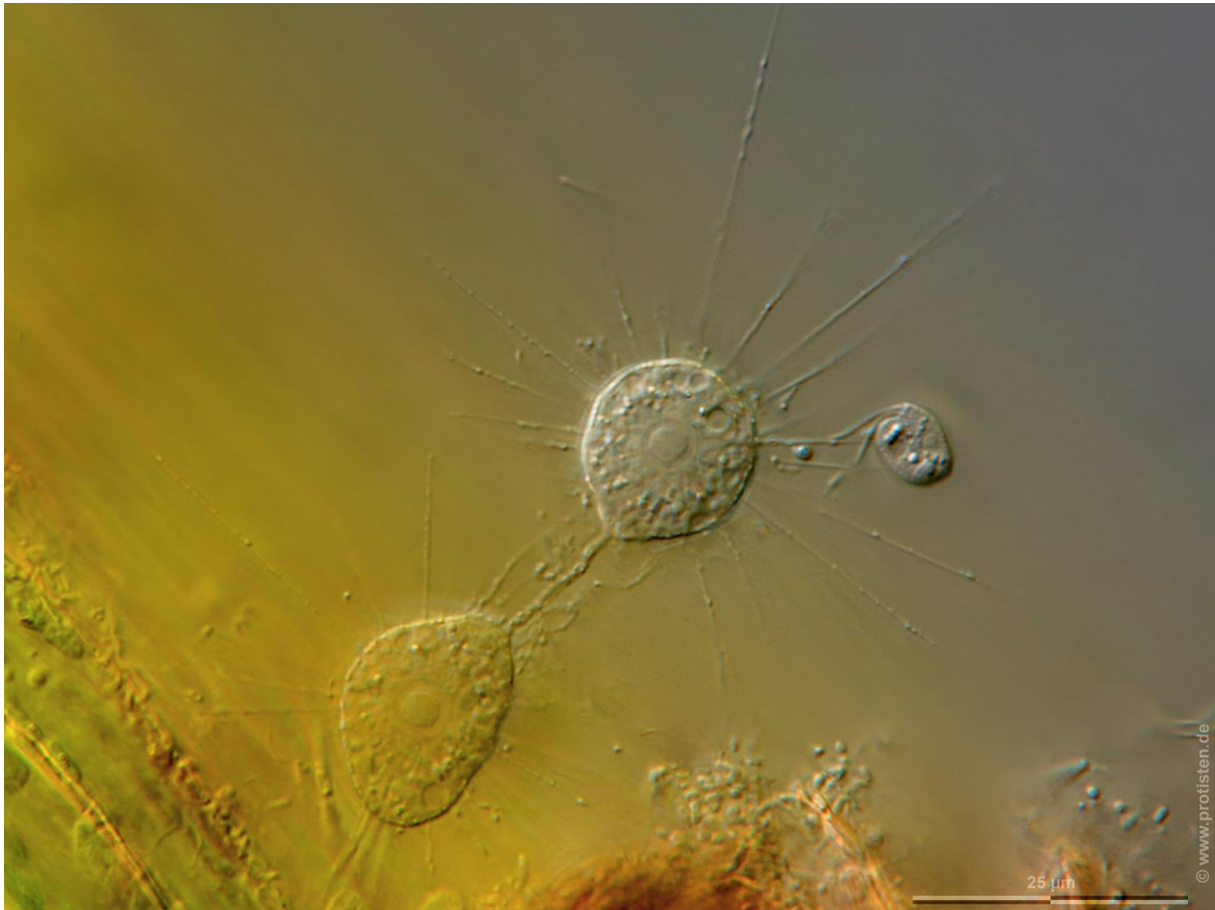
Synonyms: n. a.

EOL Phylogenetic tree: [Nuclearia simplex](#)

***Nuclearia simplex* on Java moss (*Taxiphyllum barbieri*) filaments from a freshwater aquarium**



**Fig. 1:** *Nuclearia simplex* in the final stage of binary fission. Nuclei and pseudopods are depicted. Curved pseudopods are typical for nucleariid amoebae. Scale bar indicates 50  $\mu\text{m}$ .



**Fig. 2:** *Nuclearia simplex* after binary fission with a thin plasma thread that still connects the two cells. The upper cell caught a flagellate of the species *Goniomonas truncata*. Scale bar indicates 25 μm.

## ***Nuclearia simplex* in the bog “Moor bei Kaltenhof” near Kiel (Schleswig-Holstein, Germany)**

The images below show three optical sections through a cell. Note the form of the pseudopodia, the nucleus, mitochondria and the contractile vacuole. They are marked with arrows as an example: blue (pseudopodia), orange (mitochondria), brown (contractile vacuole), green (nutrition vacuole), black (nucleus).





